

## PC1563 PC1568

# ABARTH 500-595-695 INDUCTION KIT



### PART LIST

1 X FILTER UNIT  
1 X SILICON HOSE  
1 X INDUCTION TRUMPET  
1 X ALUMINIUM CONNECTOR  
1 X POP OFF FILTER  
3 X 60-80 JUBILEE CLIP  
1 X 80-90 JUBILEE CLIP  
1 X 30-40 JUBILEE CLIP  
2 X M6 SELF LOCKING NUT  
2 X M6 WASHERS  
2 X M6x16 ALLEN KEY BOLT

## Section 1: remove the stock airbox

1. Open the bonnet. Remove the clip of the pipe that connect the turbo to the airbox.

You can use a proper specific plier or a screwdriver (in this case you will damage it).

If you use a screwdriver, place it between the clip raised section and twist the screwdriver around.



2. In the same way of point 1.1 remove the clip of the pop off valve and disconnect the popoff tube.



3. Remove the small clip under the intake and undo the 10mm bolt holding the airbox.



4. Now you have to remove the entire airbox: first disconnect the turbo-airbox pipe, then pull the airbox upwards with an even pressure at the front until it has come away from its rubber mounts.

Then pull upwards with an even pressure the back of the airbox to release from the rubber mount on the back.

The picture below shows the engine bay without the airbox.



## Section 2: remove the scuttle panel

1. Remove the two, left and right, wiper blade covers by holding the right side and pulling the left side towards the front of the car
2. Using a small screwdriver, carefully pry off the two caps hiding the nuts that hold the wiper on.





3. Remove the wipers: undo the two 13mm nuts that hold the wipers.



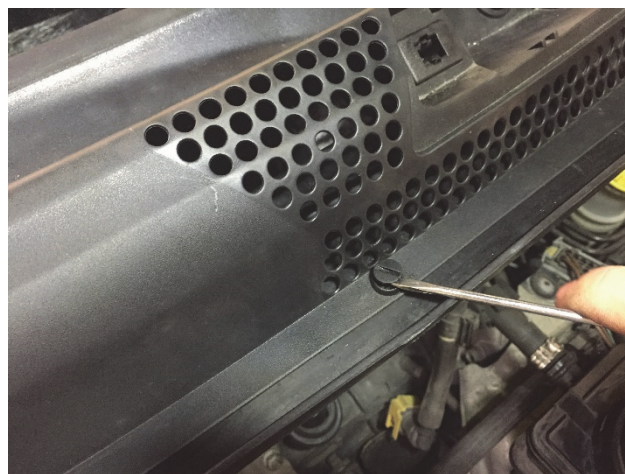
Now close the bonnet and pull the wipers off keeping note of their position.



4. Remove the front of the cowl: first, remove the three clips using a screw driver.

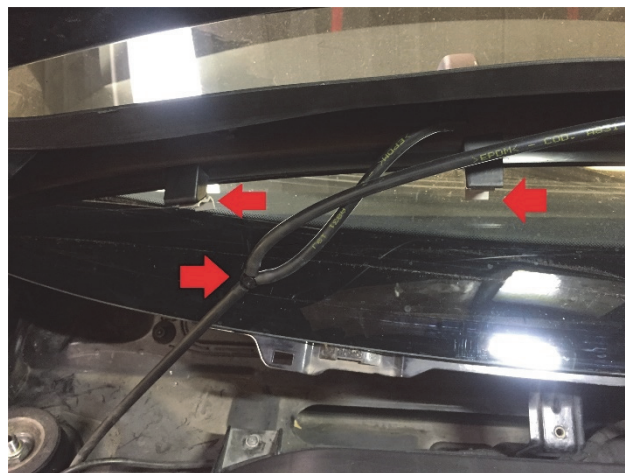
Place the screwdriver in the top gap of the clips raising the top cap.

Now you can remove the entire clips pulling out.



Now you can raise the entire panel.

Disconnect the wiper water feed tube and gently rotate the panel upwards, releasing the 6 white clips from under the windscreen.



5. Remove the scuttle panel: Firstly, you have to remove, using a Phillips screwdriver, the five screws shown below:



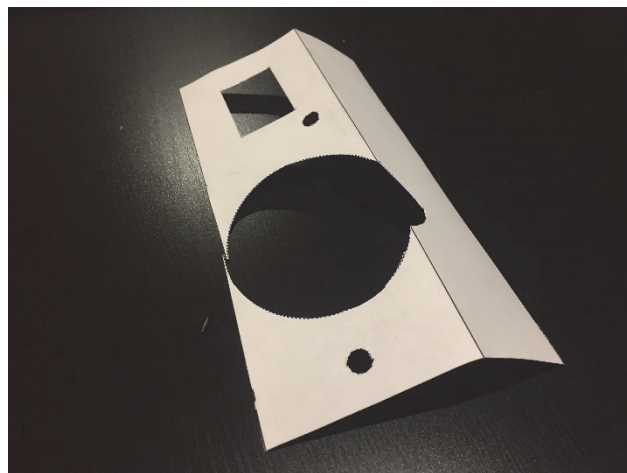
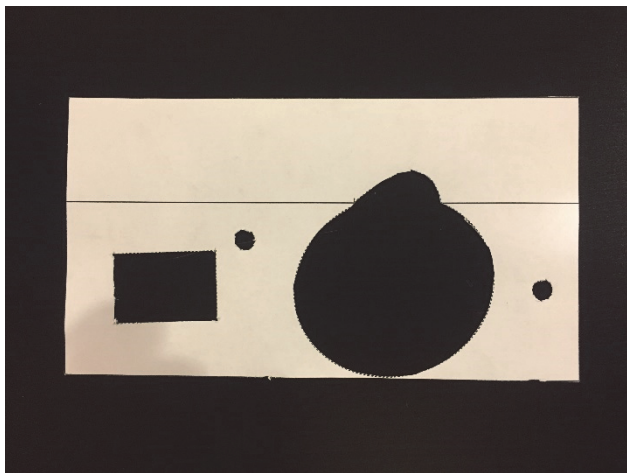
Remove the two 10mm plastic nuts on both sides of the panels.





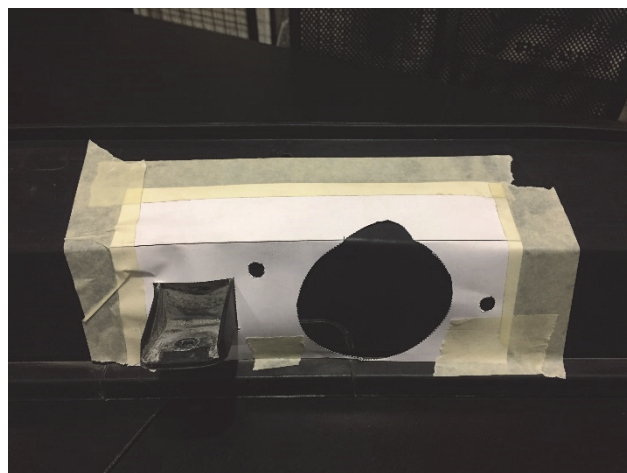
## Section 3: modify the scuttle panel

1. Place the scuttle panel on a table with the rear facing towards you. Cut out the paper jig you will find at the end of the manual following the dotted lines. fold it as shown below.

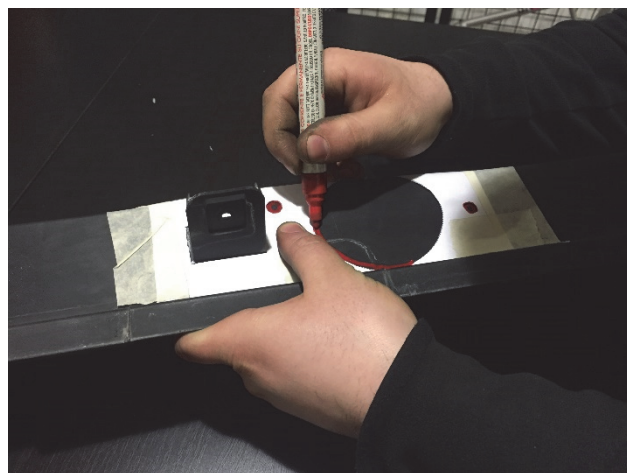


Place the jig on the panel matching up as show below.

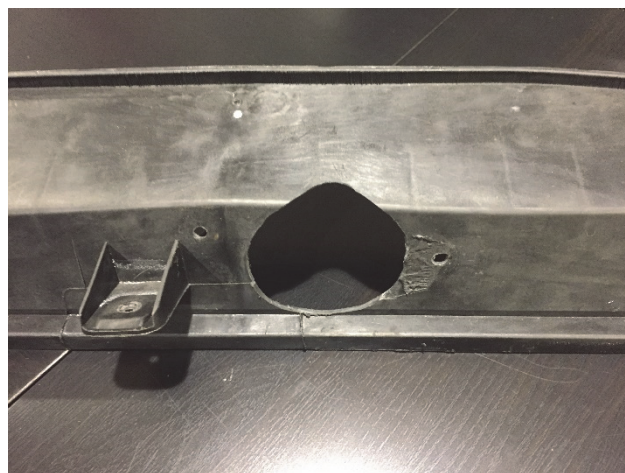
Use an adhesive plate to help holding the jig.



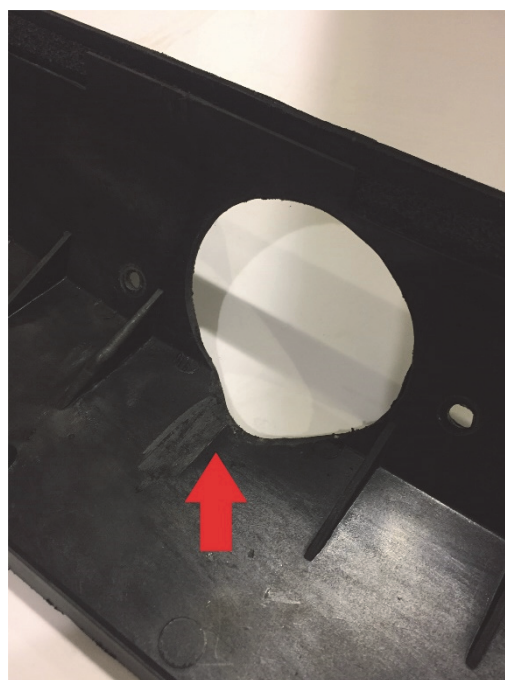
Mark, using a marker, the part on the panel you will have to cut off.



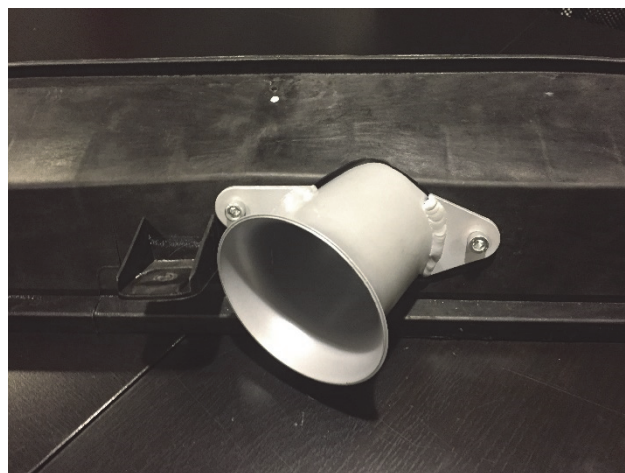
Cut and drill the holes out with a 7 mm drill-bit.



Rotate the panel 180° and remove milling the plastic rib shown below.



2. Now you can position the trumpet on the panel using the two M6X15 bolts, M6 washers and M6 self locking nut. If there is a too big gap between the trumpet and the panel, fill the gap using silicone.





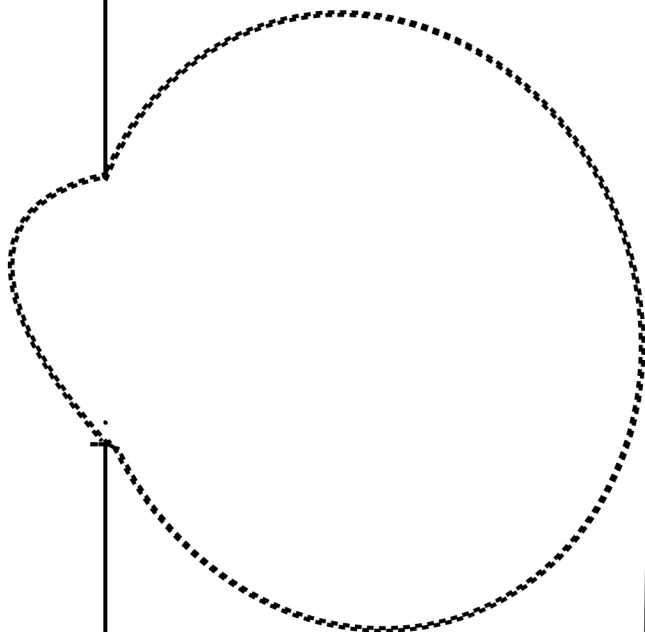
### 3. Assembly the intake on the car:

- With a bit of attention place the panel, so assembled, back on the car and reattach the rest of the parts in reverse order.
- Place the conical filter unit on the trumpet and clamp them together using a 60-80 jubilee clip. Pay attention to the orientation watching the sticker orientation.
- Connect the silicon hose to the filter unit clamp them together using a 80-90 jubilee clip.
- Connect the silicon hose to the gold anodized aluminum connector and clamp them together using a 60-80 jubilee clip. Watch DNA logo orientation.
- Connect the gold anodized aluminum connector to the stock airbox-turbo pipe and clamp them together using a 60-80 jubilee clip.
- Position the popoff filter, supplied in the kit, on the pop off and tight with the 30-40 jubilee clip. See picture below.





← Ø mm7



← Ø mm7

