



## ADJUSTABLE SHORT SHIFTER KIT PC1476

### FIAT 500 ABARTH RESTYLING MY 2017 ON INSTALLATION MANUAL



**IMPORTANT!!!! Lubricate all joints regularly for proper functioning**

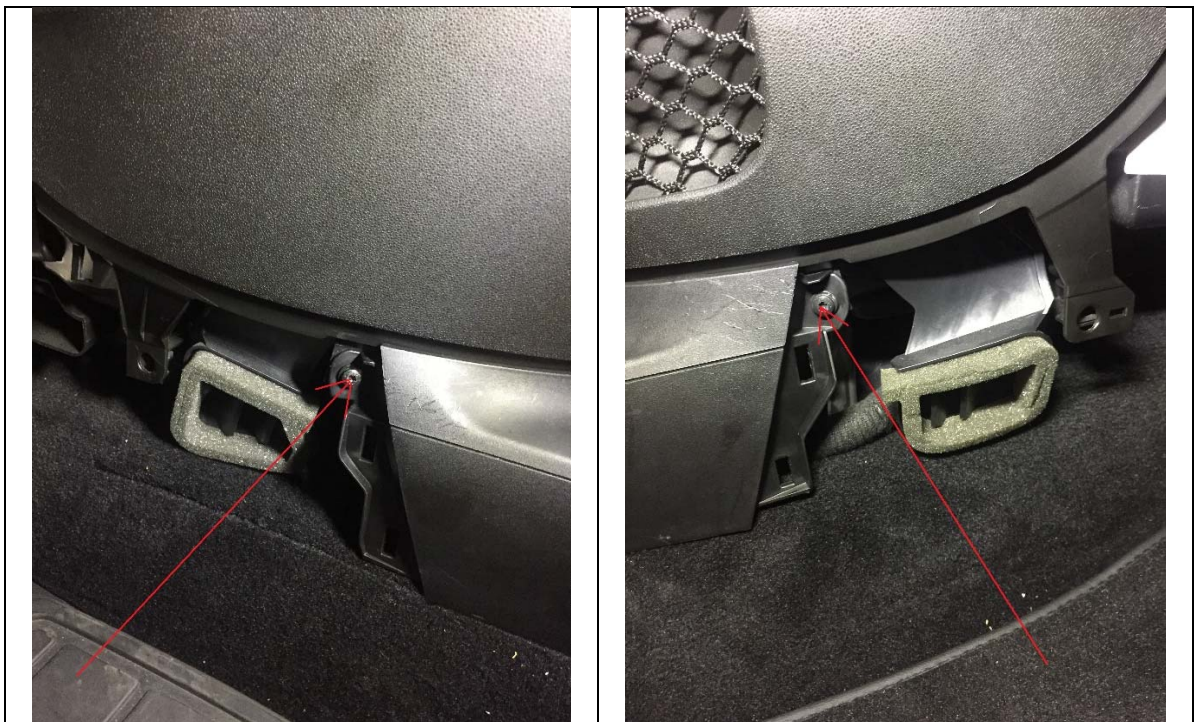
## INSTALLATION:

- Remove using a Torsen Allen key the side plastic tunnel covers. To do that, firstly remove the two screws showed in the pictures respectively for the left and right panel.



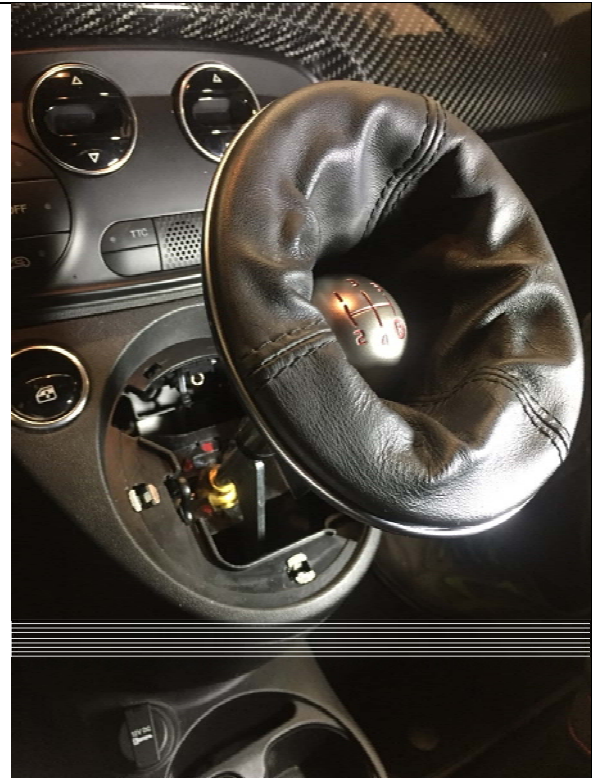
Now you can remove the two covers pulling and disengaging them.

- Using the previously used Torsen Allen key, remove the two screws showed in the pictures respectively for the left and right panel.

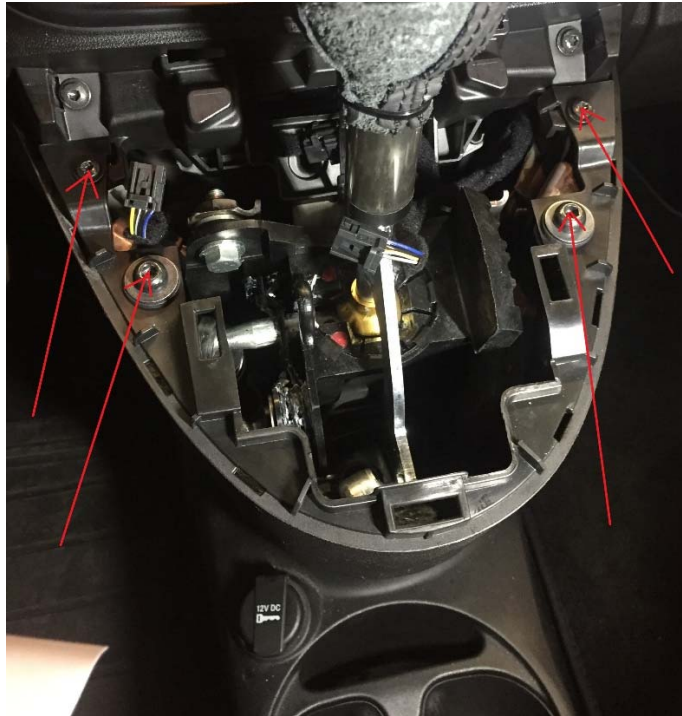




- Remove, using a small screw driver, the plastic chromed frame of the gear gaiter. Pay attention to not damage the frame!  
Disengage the top plastic tunnel cover pulling it , disconnect the electric window connectors. Now you can remove the cover.



- Unscrew the 4 top screws, using the previously used Torsen Allen key and an Allen key.

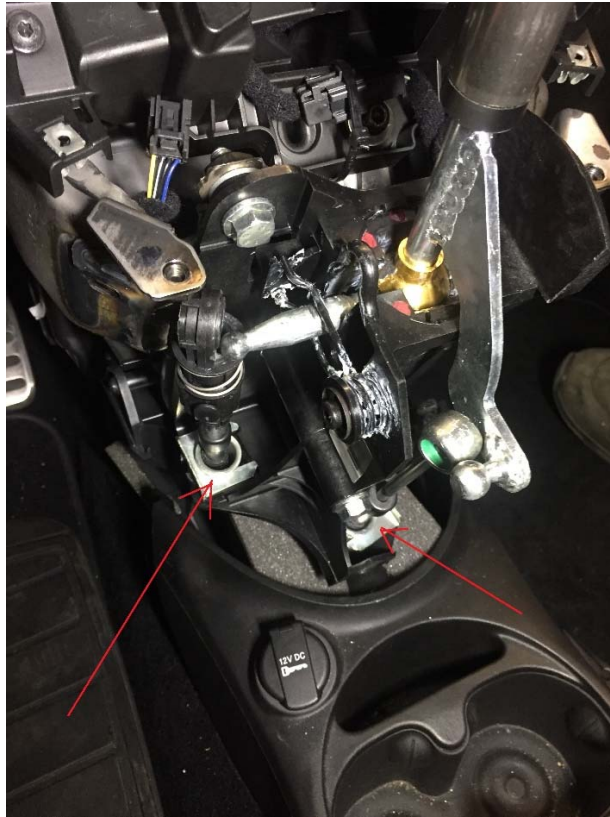


Now you can remove the tunnel.

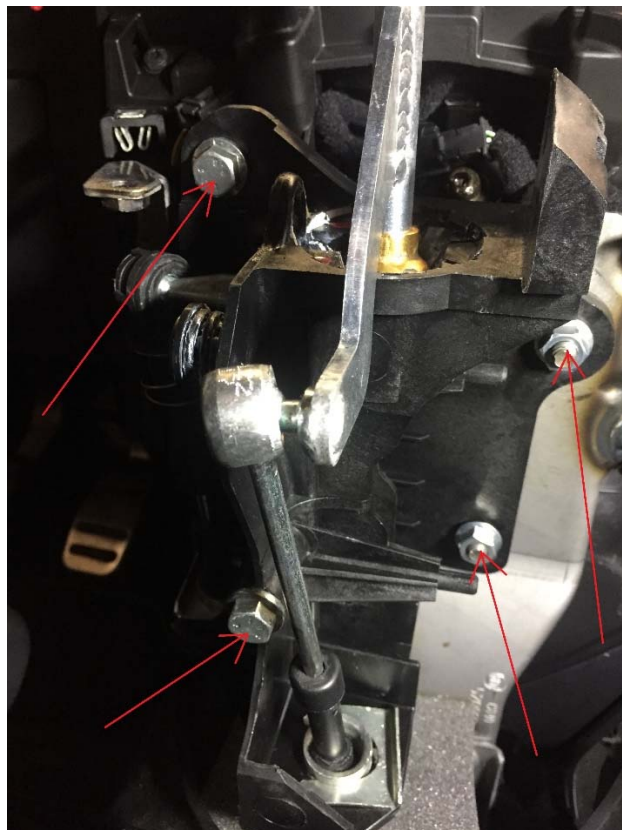
- Disconnect the two ball joints of the gear cables using a plier for seeger.



- Remove the two metal retainer clips that lock the cables to the turret. This operation can be carried out with the help of a screw driver and a set of pliers.



- Remove the 2 nuts and the 2 bolts using a 13mm spanner





- Remove the all stock gear turret.



- Now we can start fitting the DNA shifter, consider that fitting procedure is mainly the reverse of the operations you have carried out to remove the stock turret.  
Fit the DNA turret, interpose the spacer supplied and fit the stock screw ( do not tight it).  
Now fit the 2 stock nuts (do not tight them). Now, instead of the long stock screw, fit the Allen screw , supplied in the kit. Now that all 4 parts are in position, you can tight the two nuts and the two screws.



- Fit the two gear cable in the DNA turret seat and insert the two metal retainer clips. Use an hammer in order to be sure that the clip is perfectly fitted.



- Connect the ball joint of the right gear cable to the "L" rod .

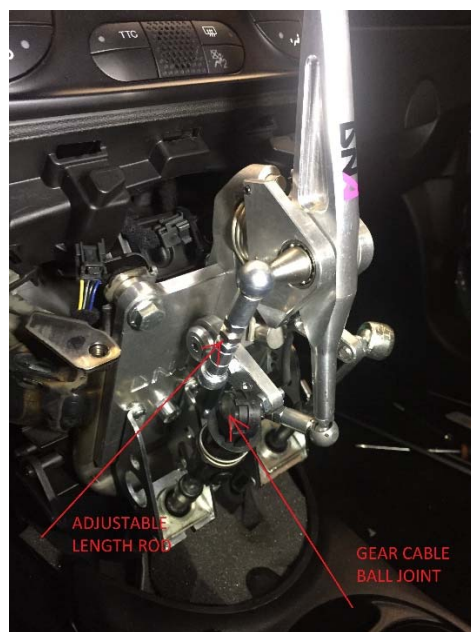


## TUNING THE SYSTEM:

- Try to engage 3rd and 4th gear, check that the lever is not touching anything during the movement. In case adjust the length of the rod ( please see picture below) that connect the lever to the “L” rod. To do that you need to unlock the two nuts ( left and right thread) , adjust the length rotating the rod and finally , when you reach the desired length, tight the nuts back. Normally this operation is not needed, being the rod length already adjusted from factory

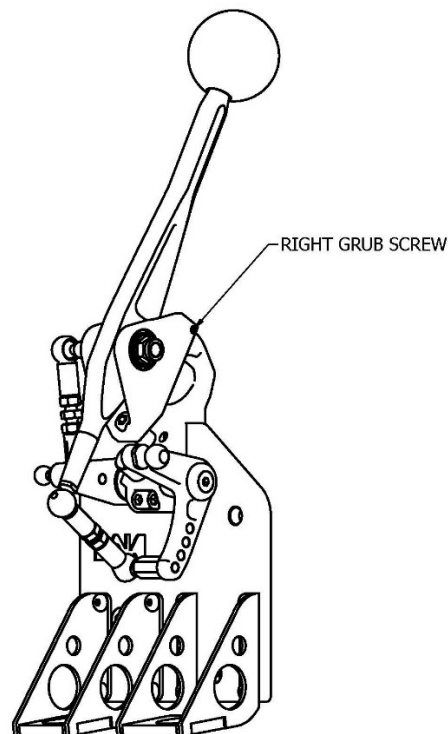
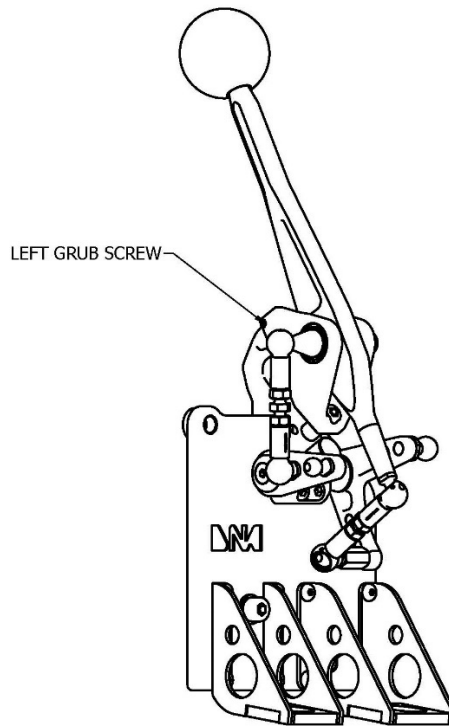


- The lever must be automatically in its center position. Connect the ball joint of the left gear cable to the DNA left rod lever. If the lever moves from its center position, adjust the length of the rod that connect the lever to the DNA left rod in a way that the lever came back in its center position. To do that you need to unlock the two nuts ( left and right thread) , adjust the length rotating the rod and finally , when you reach the desired length, tight the nuts back.





- **Completely unscrew left and right adjustable lever grub screws.**  
Try to engage 1st and 2nd gear and, in the same time, screw the left grub. Repeat this procedure untill the gears do not engage. At this point adjust uncrewing the grub half a turn untill the gears engage again. Repeat this procedure for the the right grub engaging 4th and reverse gear.



## TUNNEL AND TUNNEL TOP COVER MODIFICATION:

Some customers will not fit the covers and will leave the shifter as it is.

Otherwise you can fit the covers back but you need to make some modifications to the plastic covers:

- On the tunnel you have to remove a little piece of plastic. Refine using a small file. Picture below shows the position of the part to be cut.



Below is a detail of how the cut has to be done.



- On the tunnel top cover you have to remove a little piece of plastic. Refine using a small file.



#### TUNNEL, TUNNEL TOP COVER AND SIDE TUNNEL COVERS INSTALLATION:

In order to fit all the plastic covers, please refer to the dismantling operation described before reversing the order.



If you want you can fit the gaiter or leave as it is shown in the pictures.



## HOW TO ADJUST THE LEVER STROKE:

The stroke of the lever can also be modified, through an adjustment system, obtaining 4 different values, ensuring maximum customization according to your tastes.

The shorter the stroke, the higher the force required for a shift.

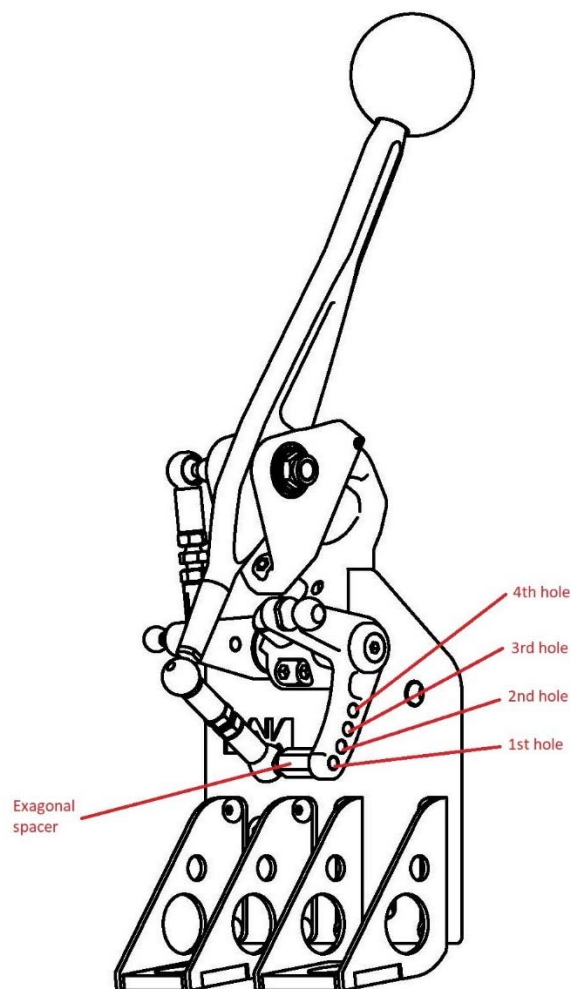
Right left lever stroke = 50mm (FIXED)

First hole forward / reverse lever travel = 67mm

Second hole Lever travel forward / reverse = 55mm

Third hole forward / reverse lever travel = 46mm

Fourth hole forward / reverse lever travel = 36mm



As default the system is set on the first hole. To change hole you need to disconnect unscrewing it, using a 10mm spanner, the exagonal spacer from the "L" lever and screw it in the desired hole. Use Loctite 243.

**IMPORTANT!!!! Lubricate all joints regularly for proper functioning**